

## LOCATION

Parkman Rd NW, Warren, OH 44485



## HIGHLIGHTS

- 2.87 acres; partially cleared
- 250' frontage
- All utilities at site
- Next to Auto Zone, across from Aldi
- 2.5 miles to downtown Warren; 1.5 miles to SR 82

## TRAFFIC

Parkman Rd = 11,000 VPD

## CONTACT

**GARY LASKO**

330.509.4546

glasko@platzrealtygroup.com

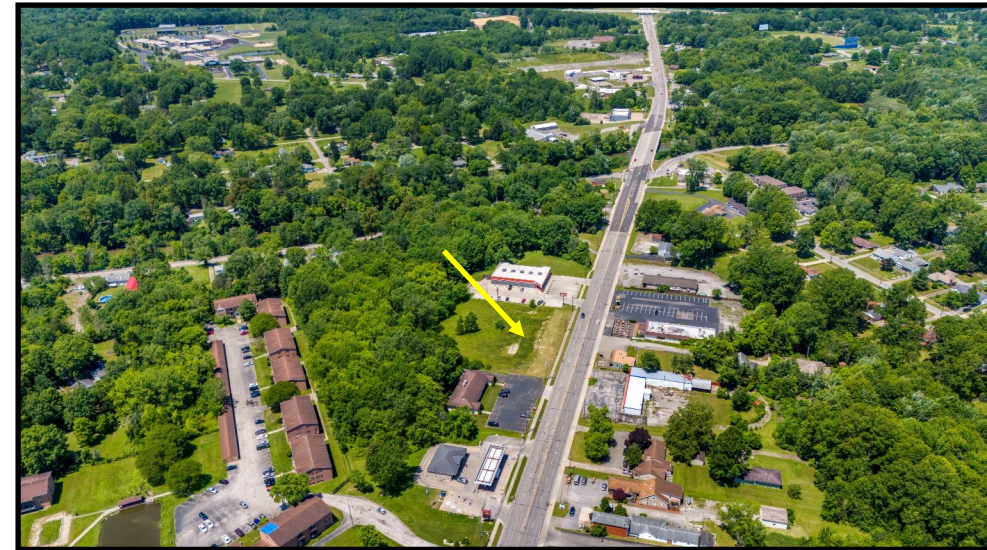
**THERESA MORSE**

330.518.6082

tmorse@platzrealtygroup.com

Office: 330.757.4889 | Fax: 330.294.5622 | 3830 Starr Centre Dr, Suite 2, Canfield, OH 44406

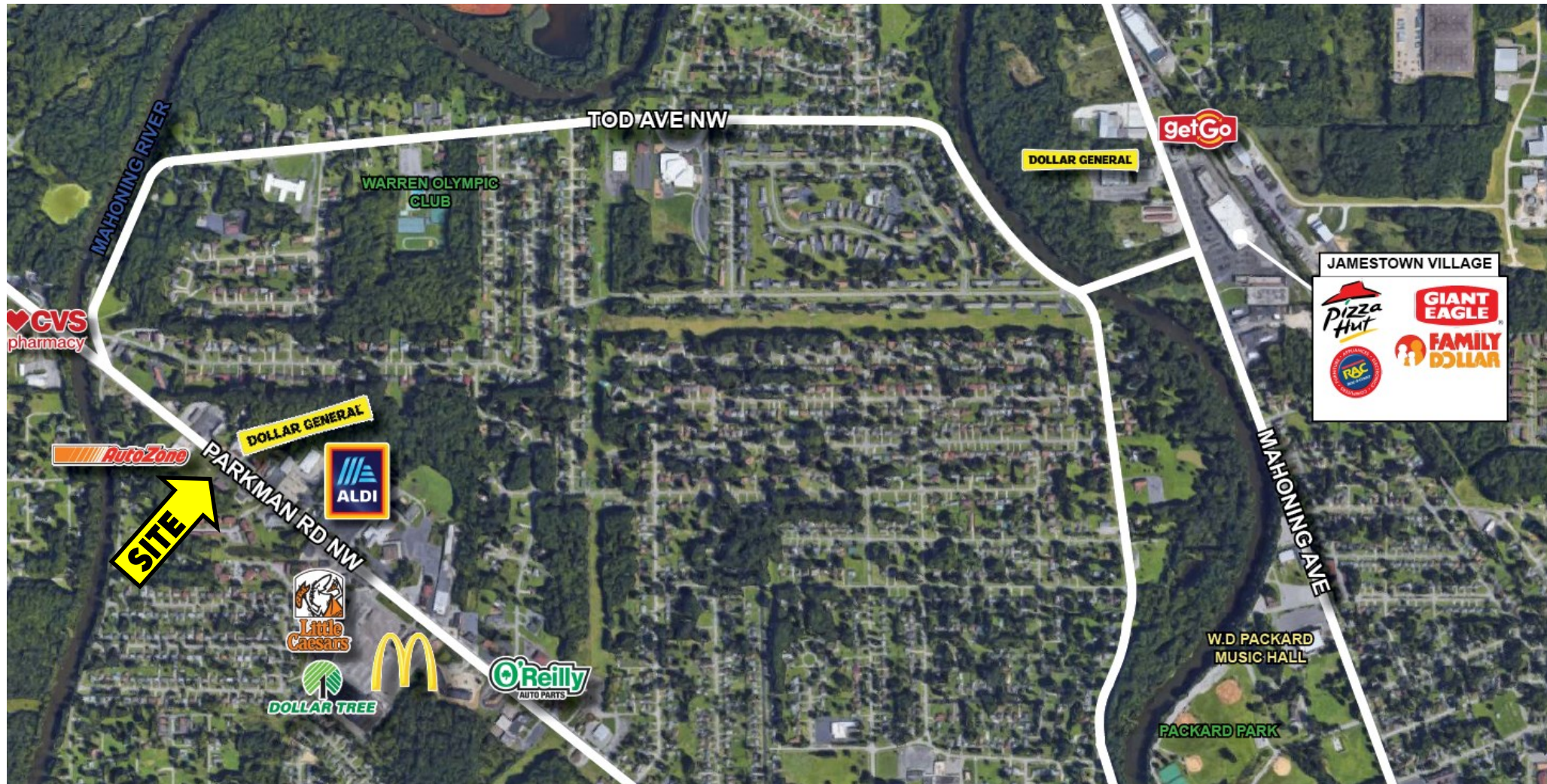
[www.PLATZREALTYGROUP.com](http://www.PLATZREALTYGROUP.com)



Office: 330.757.4889 | Fax: 330.294.5622 | 3830 Starr Centre Dr, Suite 2, Canfield, OH 44406

**[www.PLATZREALTYGROUP.com](http://www.PLATZREALTYGROUP.com)**

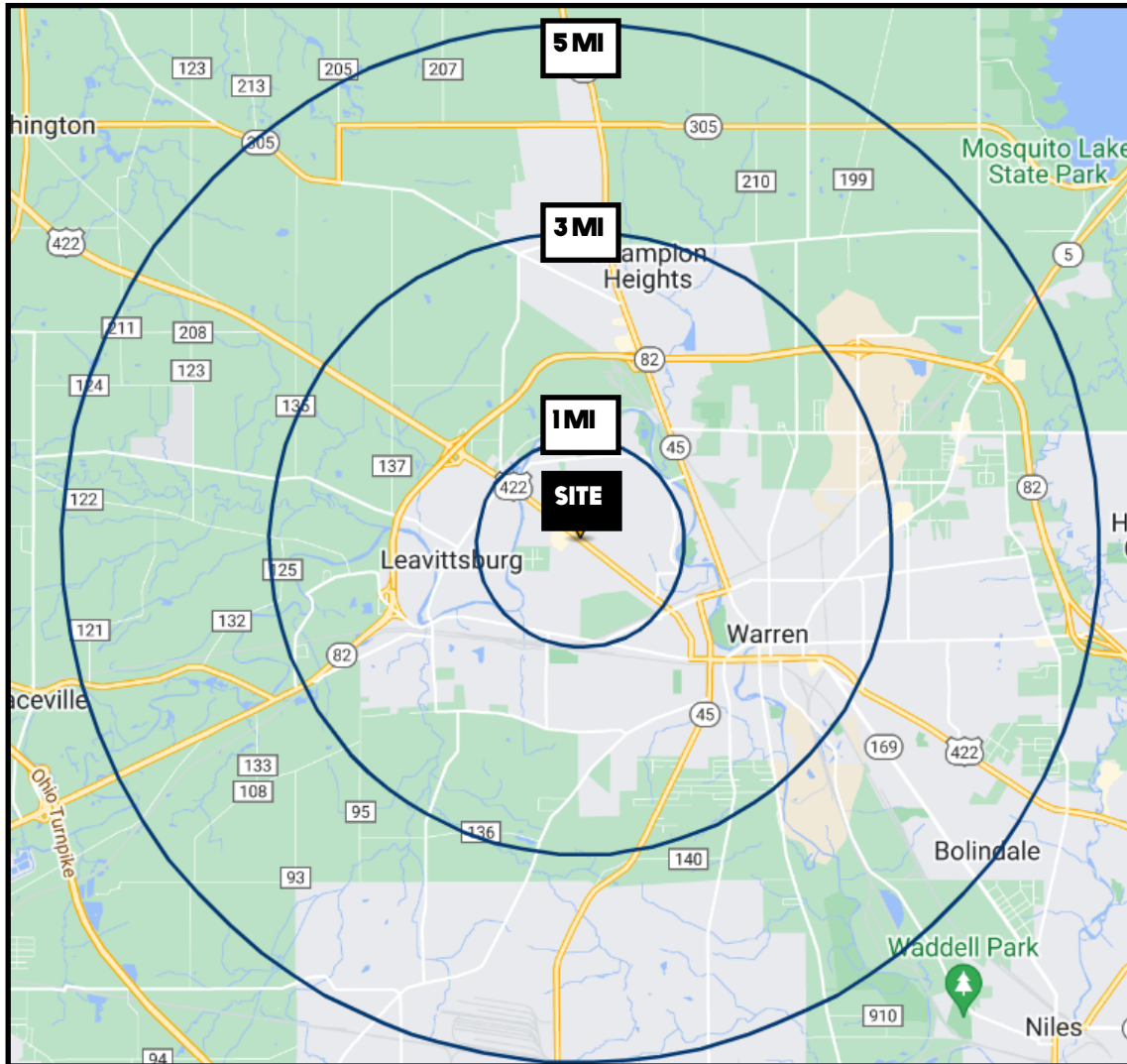
The information presented was obtained from sources believed to be true and reliable. The Platz Realty Group makes no warranties or guarantees to the accuracy of the information.



Office: 330.757.4889 | Fax: 330.294.5622 | 3830 Starr Centre Dr, Suite 2, Canfield, OH 44406

[www.PLATZREALTYGROUP.com](http://www.PLATZREALTYGROUP.com)

The information presented was obtained from sources believed to be true and reliable. The Platz Realty Group makes no warranties or guarantees to the accuracy of the information.



DEMOGRAPHICS	1 MI	3 MI	5 MI
<b>POPULATION</b>	8,051	33,968	58,693
<b>HOUSEHOLDS</b>	3,374	13,242	23,864
<b>MEDIAN AGE</b>	41	40	43
<b>AVERAGE HH INCOME</b>	\$46,809	\$42,215	\$48,366

**SITE INFORMATION**

<b>LOCATION</b>	Warren City Trumbull County
<b>PARCEL</b>	40-201750
<b>PROPERTY TYPE</b>	Land
<b>ZONING</b>	Commercial B
<b>SIZE</b>	2.87 acres 250' frontage
<b>REAL ESTATE TAXES</b>	\$1,530/year
<b>PRICE</b>	\$99,000

Office: 330.757.4889 | Fax: 330.294.5622 | 3830 Starr Centre Dr, Suite 2, Canfield, OH 44406