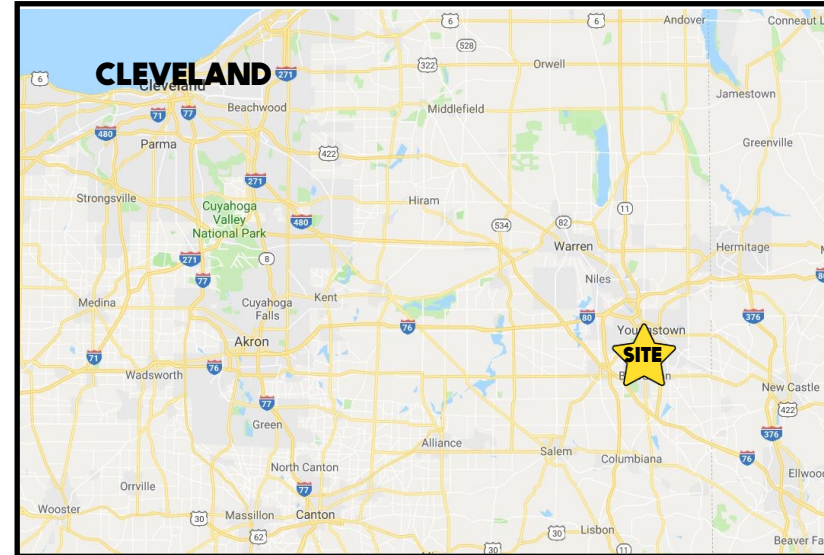


## LOCATION

5222 Market St, Boardman, OH 44512



## TRAFFIC

Market St = 14,114 VPD

## HIGHLIGHTS

- Investment Property - Fully leased retail plaza
- Front and rear door parking
- Heavy day time traffic
- Located just south of the corner of Market St & Shields Rd
- Separately metered utilities
- Owner financing available

## CONTACT

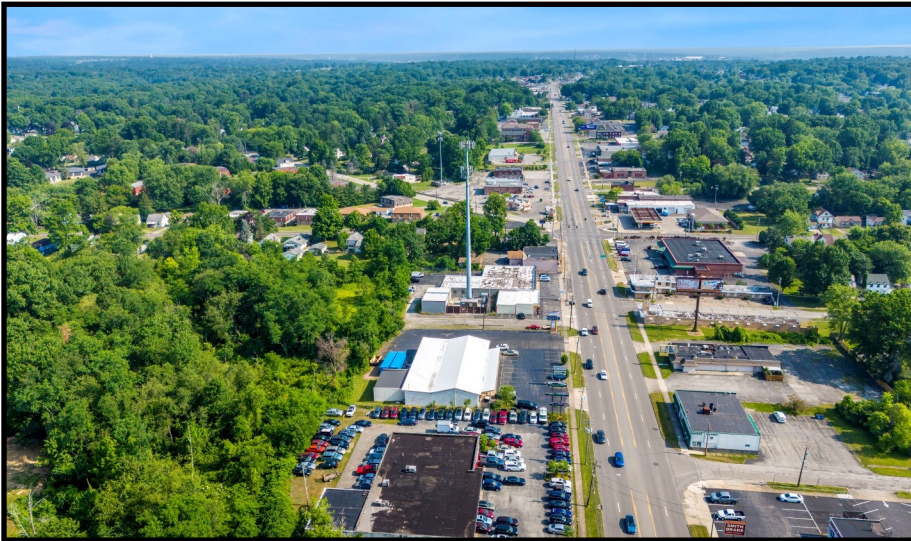
**THERESA MORSE**

330.518.6082

[tmorse@platzrealtygroup.com](mailto:tmorse@platzrealtygroup.com)

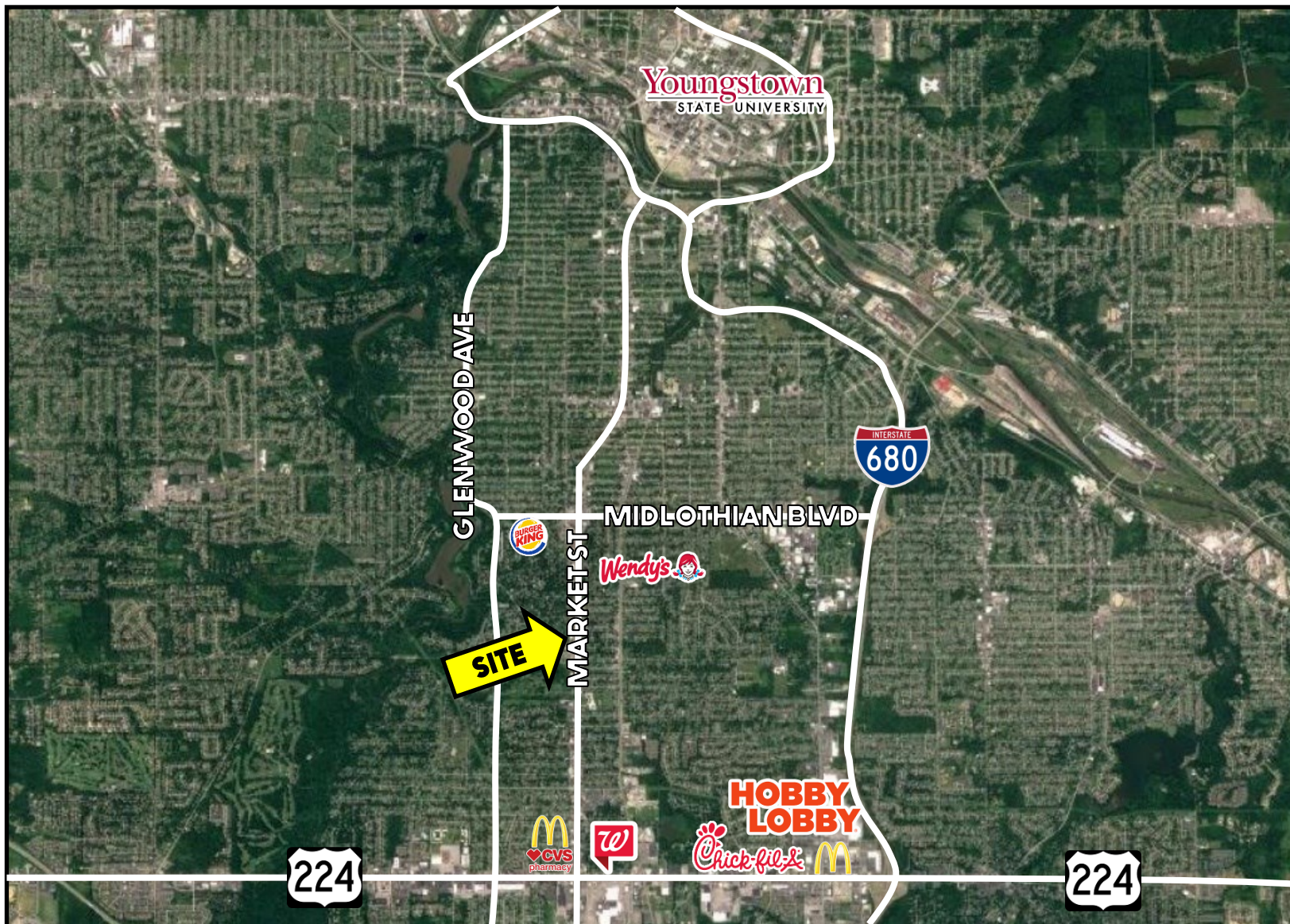
Office: 330.757.4889 | Fax: 330.294.5622 | 3830 Starr Centre Dr, Suite 2, Canfield, OH 44406

[www.PLATZREALTYGROUP.com](http://www.PLATZREALTYGROUP.com)



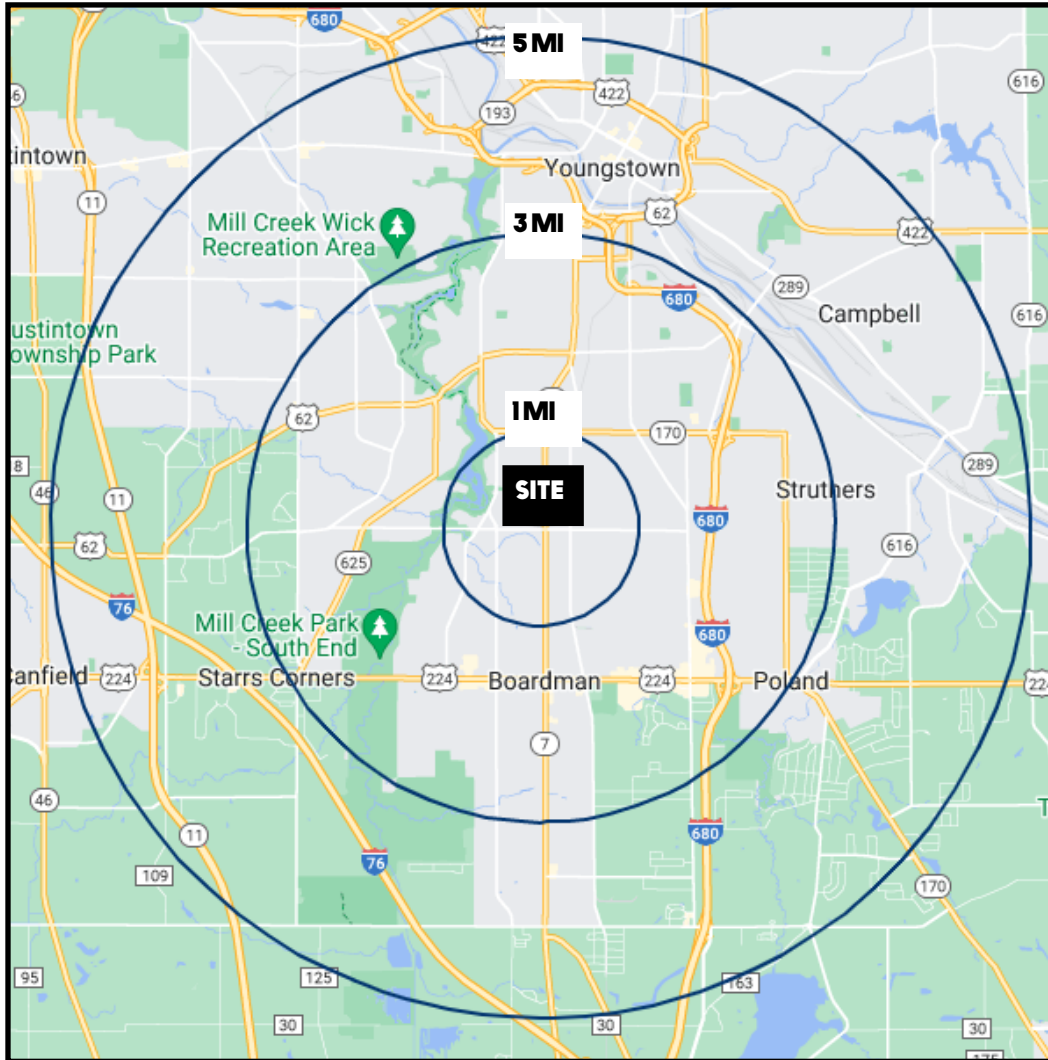
Office: 330.757.4889 | Fax: 330.294.5622 | 3830 Starr Centre Dr, Suite 2, Canfield, OH 44406

**[www.PLATZREALTYGROUP.com](http://www.PLATZREALTYGROUP.com)**



Office: 330.757.4889 | Fax: 330.294.5622 | 3830 Starr Centre Dr, Suite 2, Canfield, OH 44406

[www.PLATZREALTYGROUP.com](http://www.PLATZREALTYGROUP.com)



DEMOGRAPHICS	1 MI	3 MI	5 MI
<b>POPULATION</b>	10,754	66,464	143,189
<b>HOUSEHOLDS</b>	4,600	28,556	59,712
<b>MEDIAN AGE</b>	41	43	43
<b>AVERAGE HH INCOME</b>	\$62,608	\$60,278	\$61,615

SITE INFORMATION	
<b>LOCATION</b>	Boardman Township Mahoning County
<b>ZONING</b>	NMB
<b>SIZE</b>	9,500 SF
<b>SIGNAGE</b>	Building and Pylon
<b>PARKING</b>	Front and rear
<b>UTILITIES</b>	Separately metered
<b>REAL ESTATE TAXES</b>	\$6,360/Year
<b>PRICE</b>	\$489,000

Office: 330.757.4889 | Fax: 330.294.5622 | 3830 Starr Centre Dr, Suite 2, Canfield, OH 44406