

LOCATION

8303 East Market St, Howland, OH 44484



HIGHLIGHTS

- .9 acres next to Bud's Car Wash, across from Giant Eagle
- Exceptional location in Howland Township (Warren), OH
- 86' frontage on East Market St; 416' deep
- Rear exit on High St
- All utilities
- Zoned CRD 2

Office: 330.757.4889 | Fax: 330.294.5622 | 3830 Starr Centre Dr, Suite 2, Canfield, OH 44406

TRAFFIC

East Market St = 10,693 VPD

CONTACT

DAN CROUSE

330.647.0411

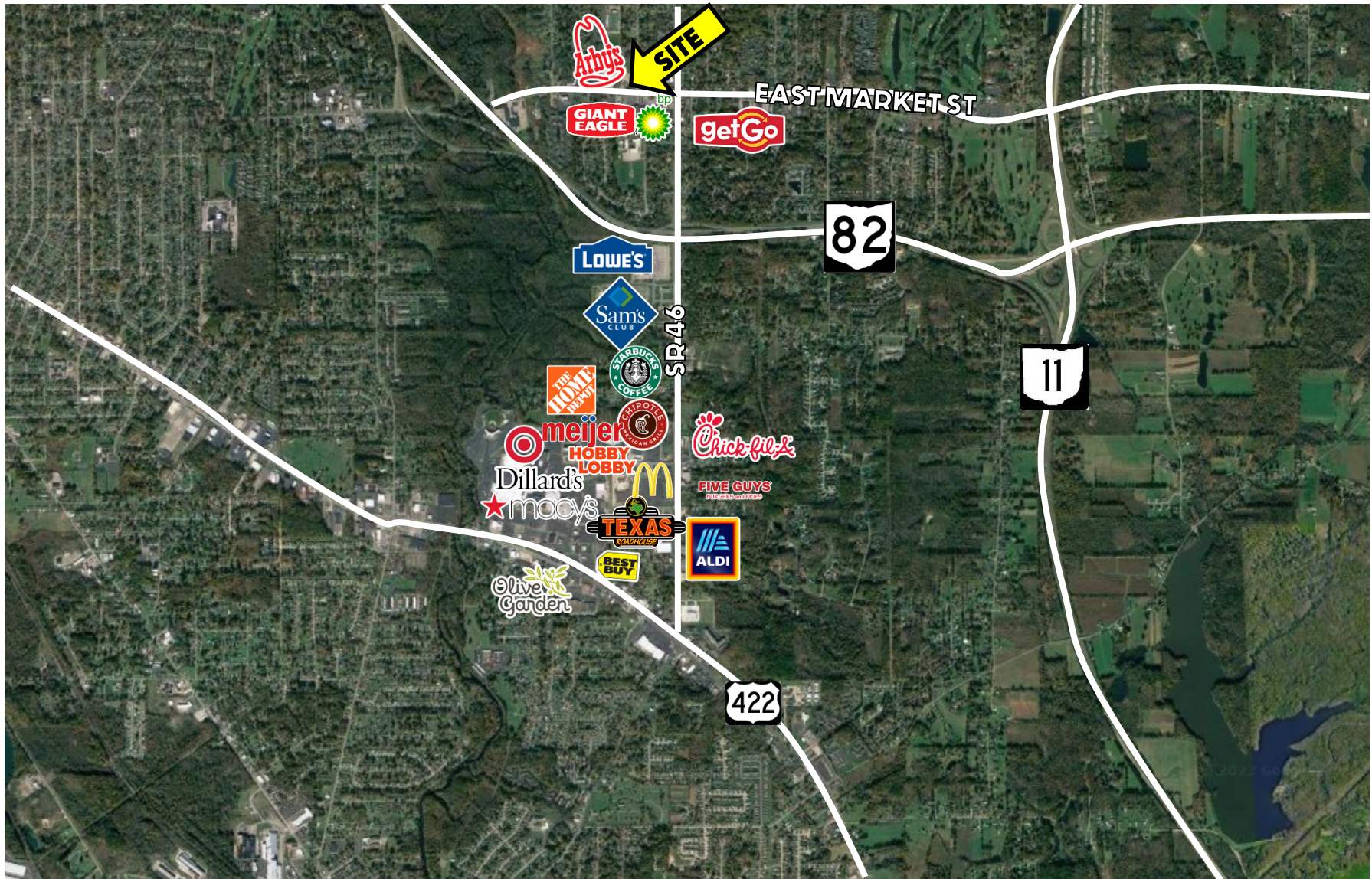
dan@themahoningvalley.com

www.PLATZREALTYGROUP.com



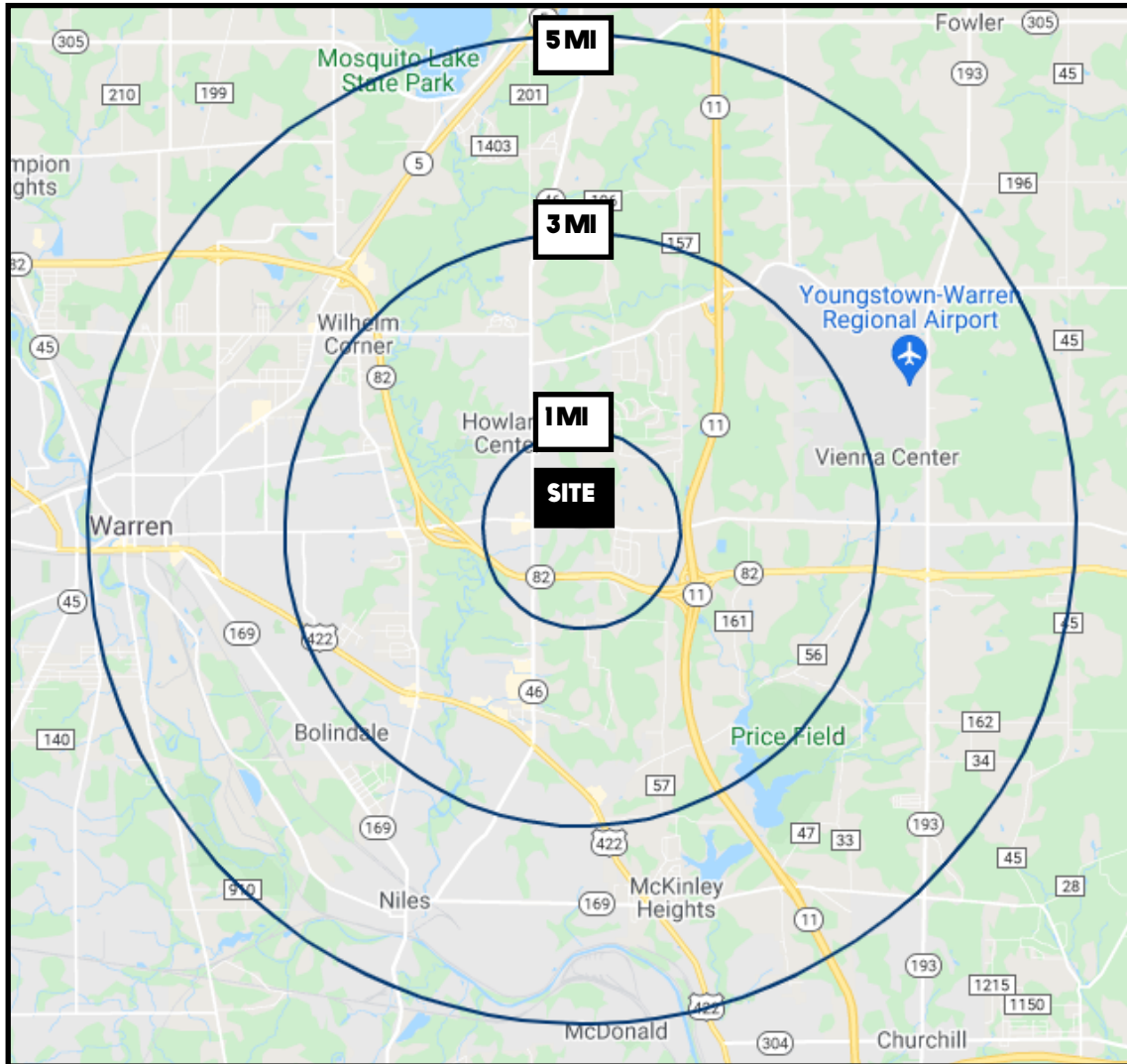
Office: 330.757.4889 | Fax: 330.294.5622 | 3830 Starr Centre Dr, Suite 2, Canfield, OH 44406

www.PLATZREALTYGROUP.com



Office: 330.757.4889 | Fax: 330.294.5622 | 3830 Starr Centre Dr, Suite 2, Canfield, OH 44406

www.PLATZREALTYGROUP.com



DEMOGRAPHICS	1 MI	3 MI	5 MI
POPULATION	4,049	33,455	72,306
HOUSEHOLDS	1,687	14,727	30,833
MEDIAN AGE	50	47	45
AVERAGE HH INCOME	\$93,634	\$69,260	\$60,700

SITE INFORMATION

LOCATION	Howland Township; Trumbull County
PARCELS	28-615600 + 28-426100
ACRES	.9 acres
DIMENSIONS	86' frontage 416' deep
ZONING	CRD 2
UTILITIES	All utilities
REAL ESTATE TAXES	\$4,081/year
PRICE	\$275,000

Office: 330.757.4889 | Fax: 330.294.5622 | 3830 Starr Centre Dr, Suite 2, Canfield, OH 44406